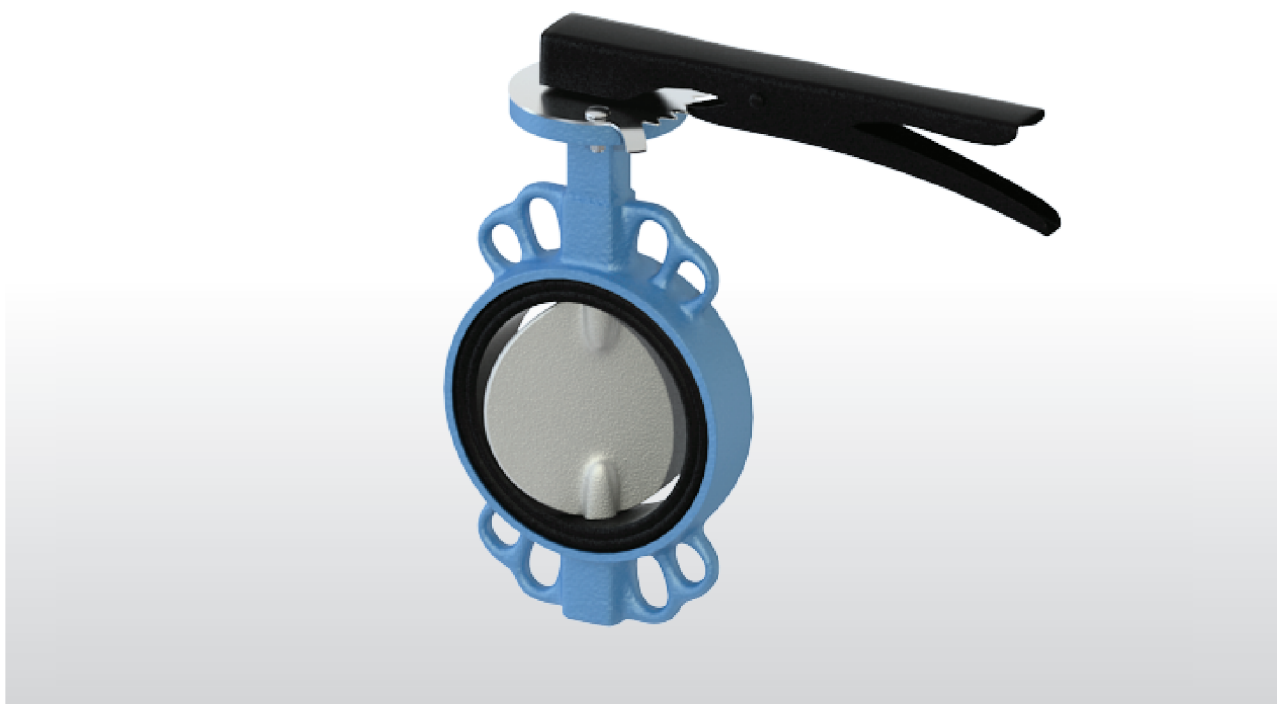


TYPE: ATLANTIS



CODE	DESCRIPTION
B306Y608	ATLANTIS wafer-type butterfly valve steel AISI316 disk dia.1"1/2 (DN 40)
B306Y609	ATLANTIS wafer-type butterfly valve steel AISI316 disk dia.2" (DN 50)
B306Y610	ATLANTIS wafer-type butterfly valve steel AISI316 disk dia.2" 1/2 (DN 65)
B306Y611	ATLANTIS wafer-type butterfly valve steel AISI316 disk dia.3" (DN 80)
B306Y612	ATLANTIS wafer-type butterfly valve steel AISI316 disk dia.4" (DN 100)
B306Y613	ATLANTIS wafer-type butterfly valve steel AISI316 disk dia.5" (DN 125)
B306Y614	ATLANTIS wafer-type butterfly valve steel AISI316 disk dia.6" (DN 150)
B306Y615	ATLANTIS wafer-type butterfly valve steel AISI316 disk dia.8" (DN 200)
B306Y616	ATLANTIS wafer-type butterfly valve steel AISI316 disk dia.10" (DN 250)
B306Y617	ATLANTIS wafer-type butterfly valve steel AISI316 disk dia.12" (DN 300)
B30AY608	ATLANTIS wafer-type butterfly valve cast iron disk dia.1"1/2 (DN 40)
B30AY609	ATLANTIS wafer-type butterfly valve cast iron disk dia. (DN 50)
B30AY610	ATLANTIS wafer-type butterfly valve cast iron disk dia.2" 1/2 (DN 65)
B30AY611	ATLANTIS wafer-type butterfly valve cast iron disk dia.3" (DN 80)
B30AY612	ATLANTIS wafer-type butterfly valve cast iron disk dia.4" (DN 100)
B30AY613	ATLANTIS wafer-type butterfly valve cast iron disk dia.5" (DN 125)
B30AY614	ATLANTIS wafer-type butterfly valve cast iron disk dia.6" (DN 150)
B30AY615	ATLANTIS wafer-type butterfly valve cast iron disk dia.8" (DN 200)
B30AY616	ATLANTIS wafer-type butterfly valve cast iron disk dia.10" (DN 250)
B30AY617	ATLANTIS wafer-type butterfly valve cast iron disk dia.12" (DN 300)