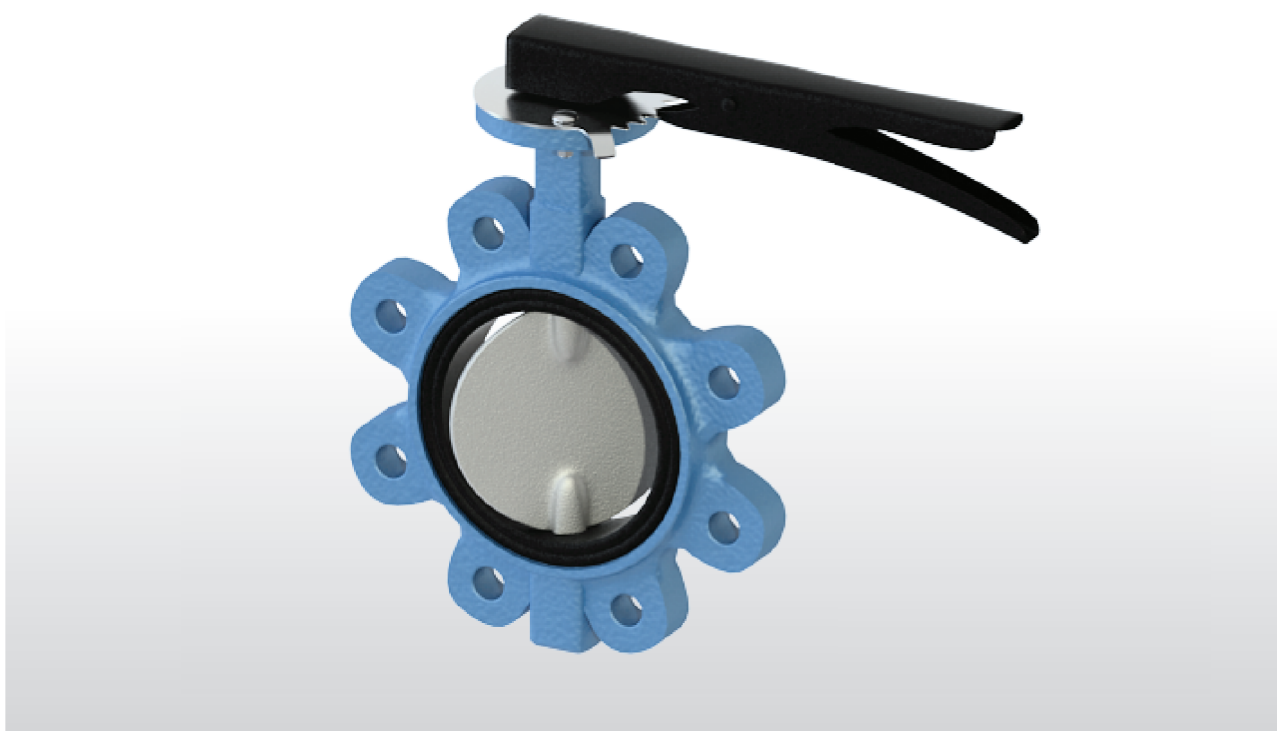


## TYPE: POLARIS

---



CODE	DESCRIPTION
B406Y608	POLARIS wafer-type butterfly valve steel AISI316 disk dia.1"1/2 (DN 40)
B406Y609	POLARIS wafer-type butterfly valve steel AISI316 disk dia.2" (DN 50)
B406Y610	POLARIS wafer-type butterfly valve steel AISI316 disk dia.2" 1/2 (DN 65)
B406Y611	POLARIS wafer-type butterfly valve steel AISI316 disk dia.3" (DN 80)
B406Y612	POLARIS wafer-type butterfly valve steel AISI316 disk dia.4" (DN 100)
B406Y613	POLARIS wafer-type butterfly valve steel AISI316 disk dia.5" (DN 125)
B406Y614	POLARIS wafer-type butterfly valve steel AISI316 disk dia.6" (DN 150)
B406Y615	POLARIS wafer-type butterfly valve steel AISI316 disk dia.8" (DN 200)
B406Y616	POLARIS wafer-type butterfly valve steel AISI316 disk dia.10" (DN 250)
B406Y617	POLARIS wafer-type butterfly valve steel AISI316 disk dia.12" (DN 300)
B40AY608	POLARIS wafer-type butterfly valve cast iron disk dia.1"1/2 (DN 40)
B40AY609	POLARIS wafer-type butterfly valve cast iron disk dia.2" (DN 50)
B40AY610	POLARIS wafer-type butterfly valve cast iron disk dia.2" 1/2 (DN 65)
B40AY611	POLARIS wafer-type butterfly valve cast iron disk dia.3" (DN 80)
B40AY612	POLARIS wafer-type butterfly valve cast iron disk dia.4" (DN 100)
B40AY613	POLARIS wafer-type butterfly valve cast iron disk dia.5" (DN 125)
B40AY614	POLARIS wafer-type butterfly valve cast iron disk dia.6" (DN 150)
B40AY615	POLARIS wafer-type butterfly valve cast iron disk dia.8" (DN 200)
B40AY616	POLARIS wafer-type butterfly valve cast iron disk dia.10" (DN 250)
B40AY617	POLARIS wafer-type butterfly valve cast iron disk dia.12" (DN 300)